



GENUINE PARTS

INSTALLATION INSTRUCTIONS

1. **DESCRIPTION:** Spare tire kit
2. **APPLICATION:** 370Z Convertible
3. **PART NUMBER:** 999W5 ZW000
4. **KIT CONTENTS:**

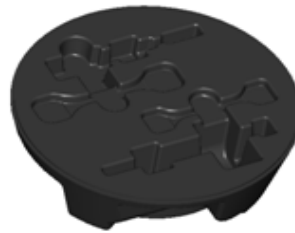
Item	QTY	Description	Part Number
A	1	Spare wheel	40300-JK00B
B	1	Spare wheel clamp assembly	74810-JY02A
C	1	Tool storage tray	849A7-1ET0A
D	1	Inner trim panel	84961-1ET0A
E	1	Jack	99550-EJ26C
F	1	Jack rod	99552-0U000
G	1	Spare tire cover	84960-1ET2A
H	1	Air valve	40311-S3500
J	1	Spare tire caution label	40353-JL10A
K	1	Tire placard segment	999G1-ZW000-TP



A



B



C



D



E



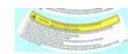
F



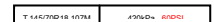
G



H



J



K

5. **TOOLS REQUIRED:**

- No tools required

6. **PRE-INSTALLATION CAUTIONS/NOTES:**

⚠ WARNING

- All warning/ caution labels should be properly applied to the spare wheel and to the vehicle (tire placard)
- Use alcohol wipe to clean and prep surfaces before applying labels.

⚠ CAUTION

- Use only the approved spare tire for this application. Consult your dealer for further information.
- The spare tire and air valve must be installed to the spare wheel by a properly trained technician.



Step 1) Remove trunk floor cover.



Step 2) Remove spare tire cover.

**Note: This part should be discarded.
A replacement is included in the kit.**

Step 3) Remove the luggage compartment storage tray (not shown) along with the puncture repair kit.

Note: The vehicle is originally equipped with a puncture repair kit. The spare tire replaces the repair kit. The luggage compartment storage tray must be removed to make space for the spare tire. The puncture repair kit should be returned to the customer.



Step 4) If the spare tire caution label has not been applied to the spare wheel - apply as shown in the photo.



Step 5) Place spare wheel and tire assembly into place as shown in the photo.

Note: Be sure wheel is facing down and that it is centered in the available space.

Step 6) Install the spare wheel clamp assembly. Tighten the clamp assembly by hand. Do not over tighten.



Step 7) Place small tool storage tray that is included in the kit into the center of the spare wheel.

Step 8) Install inner trim panel (not shown) in location identified by the arrows in the photo.



Step 9) Place jack and jack rod in the open spots to the left of the spare tire. Tools should be stored as shown in the photo.



Step 10) Install spare tire cover included in kit in place of the cover removed in step #2.



Step 11) Return trunk floor cover removed in step #1.



Step 12) The tire and loading information label (placard) is located on the body inside the driver's door. Apply the tire placard segment over the space on the placard that is identified with the word "spare".

Tire placard segment goes here