

## INSTALLATION INSTRUCTIONS

TY-201-N02-A

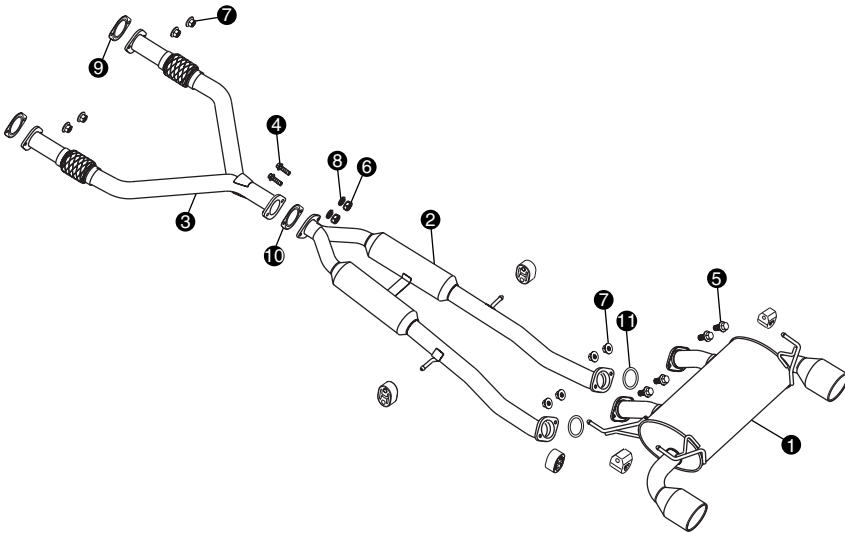
**1. DESCRIPTION:** Nismo Sport Exhaust Kit

**2. APPLICATION:** ALL 370Z MODELS

**3. PART NUMBER:** B0100-1EA25

**4. KIT CONTENTS:**

Item No.	Qty	Service Part Number	Description
1	1	B0020-1EA00	Exhaust Front Tube
2	1	B0300-1EA00	Center Muffler
3	1	B0100-1EA00	Main Muffler
4	1	B0690-1EA00	Gasket and Hardware Kit
5	1	TY-201-N02-A	Installation Instructions



Component parts

- |                      |                     |                   |
|----------------------|---------------------|-------------------|
| ① Main muffler       | ⑤ Bolt(M10×20)×4    | ⑨ Gasket(Metal)×2 |
| ② Center muffler     | ⑥ Nut(M10)×2        | ⑩ Gasket×1        |
| ③ Exhaust front tube | ⑦ Flange nut(M10)×8 | ⑪ Ring gasket×2   |
| ④ Bolt(M10×30)×2     | ⑧ Washer×2          |                   |



# INSTALLATION INSTRUCTIONS – NISMO Sport Exhaust Kit

## 5. TOOLS REQUIRED:

### ■ Main tools



Torque wrench



Large, flat tip  
screwdriver



Open end or box wrench  
(14mm)



Lubricant spray



Ratchet wrench



Socket (14 mm)

## 6. INSTALLATION PRECAUTIONS AND NOTES:

★ You will see various symbols in this manual. They are used in the following ways:



### WARNING

This is used to indicate the presence of a hazard that could cause death or serious personal injury. To avoid or reduce the risk, the procedures must be followed precisely.



### CAUTION

This is used to indicate the presence of a hazard that could cause minor or moderate personal injury or damage to your vehicle. To avoid or reduce the risk, the procedures must be followed carefully.

### A) Before Installation

1. After opening the packing, check to see if any parts are missing and that the product is not damaged.
2. This product should be installed with proper installation tools.
3. Install this product while observing all warnings and precautions stated in this manual.



### WARNING

- Do not make any alteration or modification to this product. Serious injury may result.
- After installation, check for clearance and interference with the body and/or chassis parts. Do not drive the vehicle if interference is found. Interference could lead to an accident and serious injury.



### CAUTION

- Before installation, confirm application and part number. If the product is installed on a different vehicle, it may result in vehicle damage or an accident.
- Allow the vehicle to cool before installation.
- The specified torque shown in this manual must be used. Tightening bolts above the specified torque may result in damage

### NOTE

- Check with your local Department of Motor Vehicles for regulations related to vehicle sound regulations.
- This exhaust has been tested for noise level per SAE J1169 and does not exceed 95 dBA.

# INSTALLATION INSTRUCTIONS – NISMO Sport Exhaust Kit

## B) Before Using



### WARNING

- Read your Vehicle Owner's Manual to assist you in the safe operation of your vehicle. Failure to do so may result in an accident and serious personal injury.
- If any abnormal noises are heard or abnormal vibrations are felt, immediately stop the vehicle in a safe place and check your vehicle. Driving with an abnormal condition may result in an accident and serious personal injury.
- Do not use the product for anything other than the purpose described in this manual. Any accident or injury incurred by improper use of this product is the sole responsibility of the user.

### NOTE

- The minimum distance between the ground and the bottom of the vehicle becomes less due to the installation of the product.
- When driving over bumps or unpaved or rough roads, lower speed may be necessary to avoid damage from contact between the road and the vehicle's body.

## 7. INSTALLATION PROCEDURE:

### A) Removal



### CAUTION

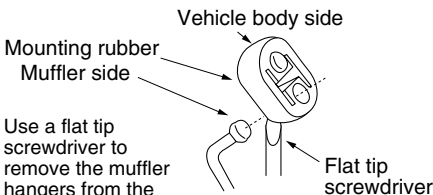
- During removal, do not damage the driveshaft.

### NOTE

- Sequence of removal.
  1. Exhaust front tube
  2. Center muffler
  3. Main muffler

First remove the nuts of the part to be replaced and mounting rubber, and then remove the genuine exhaust system from the vehicle body.

#### Enlarged view



Use a flat tip screwdriver to remove the muffler hangers from the rubber mounts. Lubricate as needed.

# INSTALLATION INSTRUCTIONS – NISMO Sport Exhaust Kit

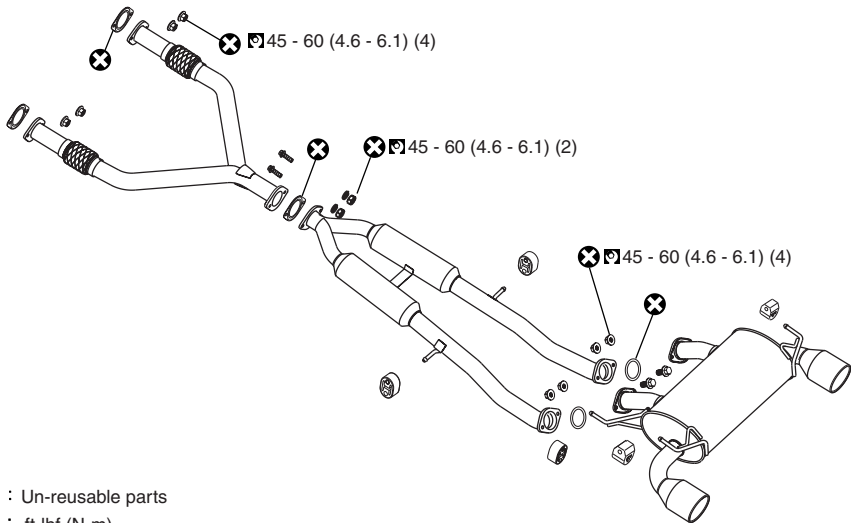
## B) Installation

Install in the reverse order of removal.  
Use lubrication on rubber mounts as needed.



### CAUTION

- Before installation, remove deposits from each connection portion.
- Replace all the gaskets with new ones. (Use included gaskets.)
- If the heat insulator on the vehicle is badly deformed, repair or replace it.
- Make sure during installation there is clearance at the brake piping and the propeller shaft.
- Temporarily tighten each installation bolt and nut, and after confirming that there is a proper alignment of the system, then tighten them to the specified torque.
- Install so that the main muffler is as horizontal as possible when viewed from the rear of the vehicle.
- Make sure that rubber mounts are not excessively stretched or twisted.
- After installation, with the engine running, check for exhaust gas leakage and unusual noises.



⊗ : Un-reusable parts

⊞ : ft-lbf (N-m)