



---

# SERVICE BULLETIN

---

Classification:

EC09-028

Reference:

NTB09-136

Date:

December 1, 2009

---

## 2005 AND LATER; ECM VIN REGISTRATION

**APPLIED VEHICLES:** All Nissan 2005 and later

### SERVICE INFORMATION

The Applied Vehicles must have the correct Vehicle Identification Number (VIN) registered in the Engine Control Module (ECM). The VIN registration process must be performed under the following conditions.

- When installing a new ECM
- If, during vehicle service, the VIN registration inside the ECM is found to be missing or incorrect.

When needed, use the Service Procedure in this bulletin to perform ECM VIN registration.

### CLAIMS INFORMATION

Refer to the current Nissan Warranty Flat Rate Manual and use the appropriate claims coding for any repairs being performed.

Nissan Bulletins are intended for use by qualified technicians, not 'do-it-yourselfers'. Qualified technicians are properly trained individuals who have the equipment, tools, safety instruction, and know-how to do a job properly and safely. NOTE: If you believe that a described condition may apply to a particular vehicle, DO NOT assume that it does. See your Nissan dealer to determine if this applies to your vehicle.

## SERVICE PROCEDURE

1. Connect C-III to the vehicle and perform the initial selections:

**NOTE:** If C-III is already connected, go to Step 2.

- a. Start C-III and Wait for the “Detecting VI/MI in progress” message to clear.
- b. Select the detected VI from the list.
- c. Wait for the “Checking the firmware version” message to clear.
- d. Select Model and Year.
- e. Confirm the correct model and year were selected.
- f. Select Repair.

2. Select Direct Diagnostic Mode icon

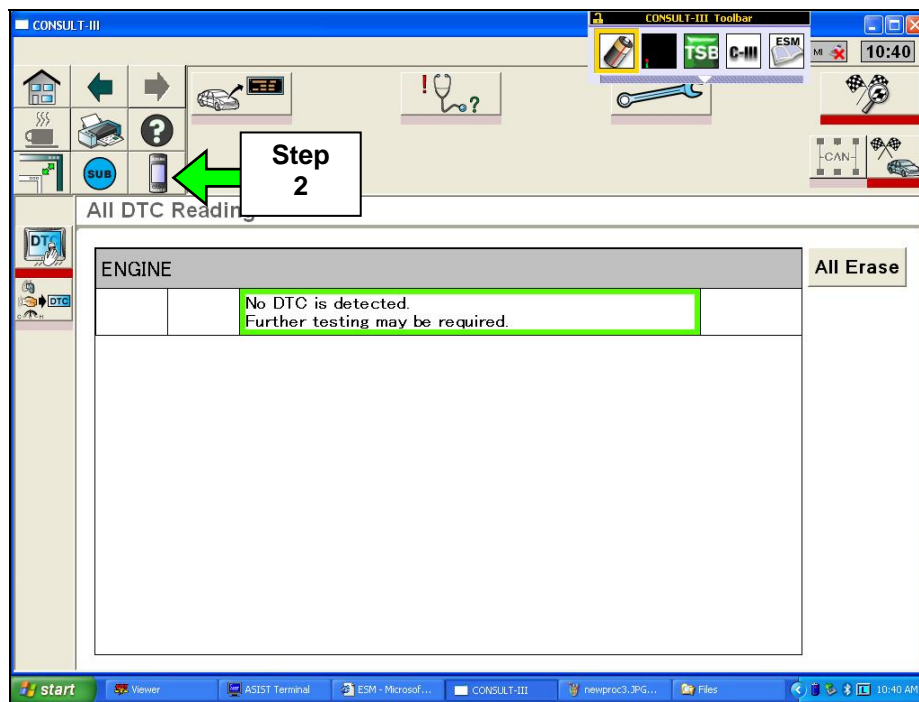


Figure 1

### 3. Select **System Diagnosis**

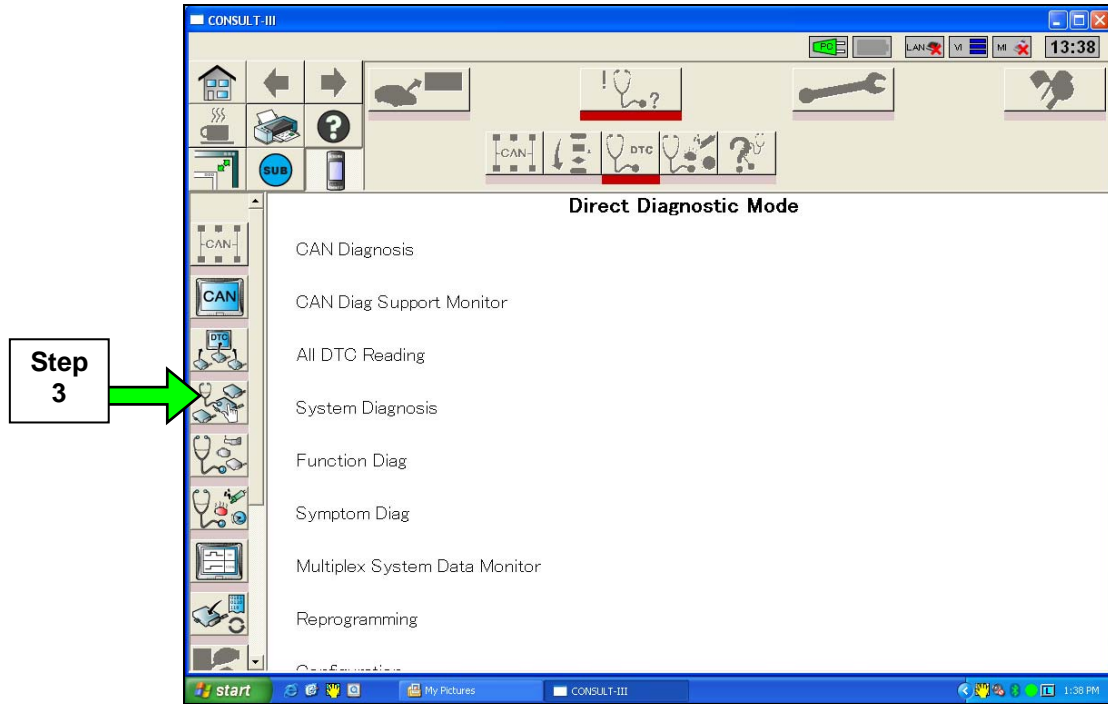


Figure 2

### 4. Select **Engine**

### 5. Select **OK**

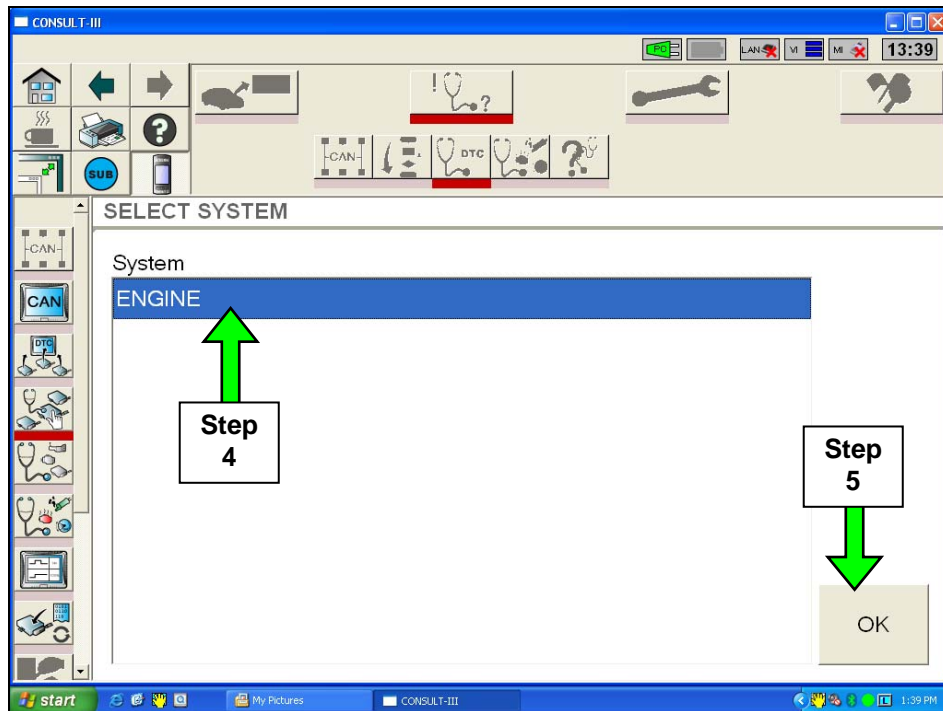


Figure 3

6. Select **Work Support**

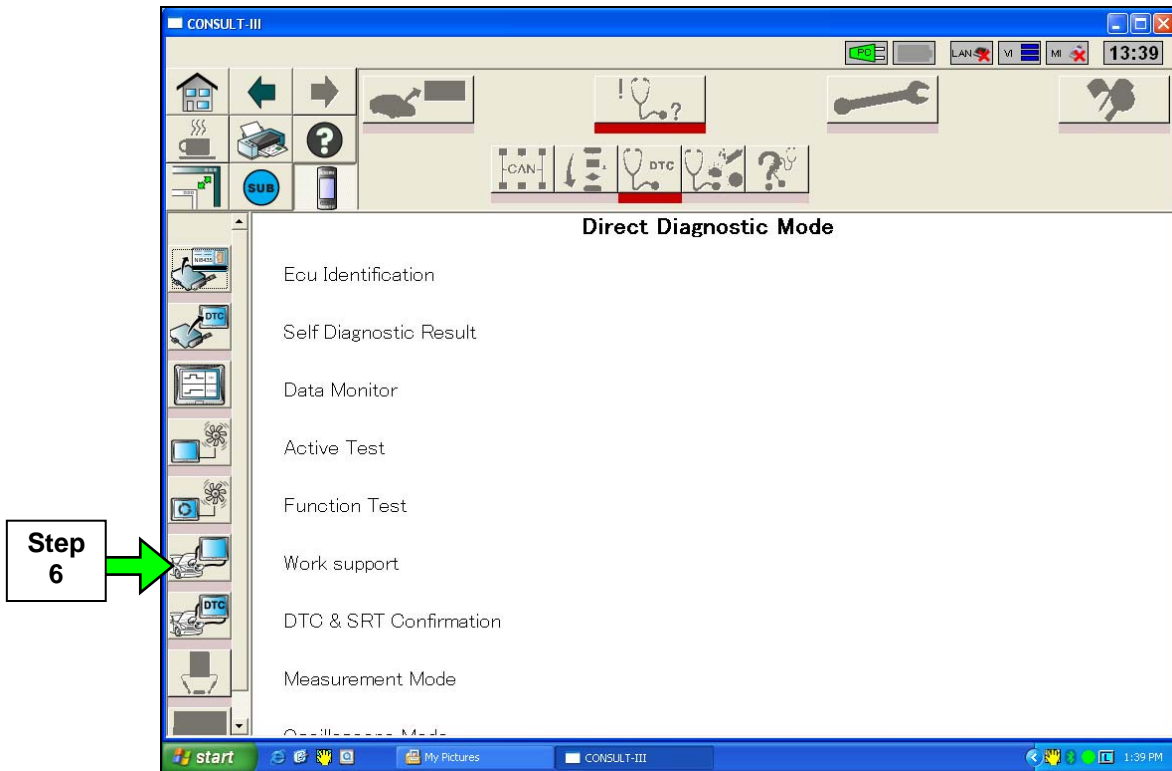


Figure 4

7. Select **VIN Registration**

8. Select **Next**

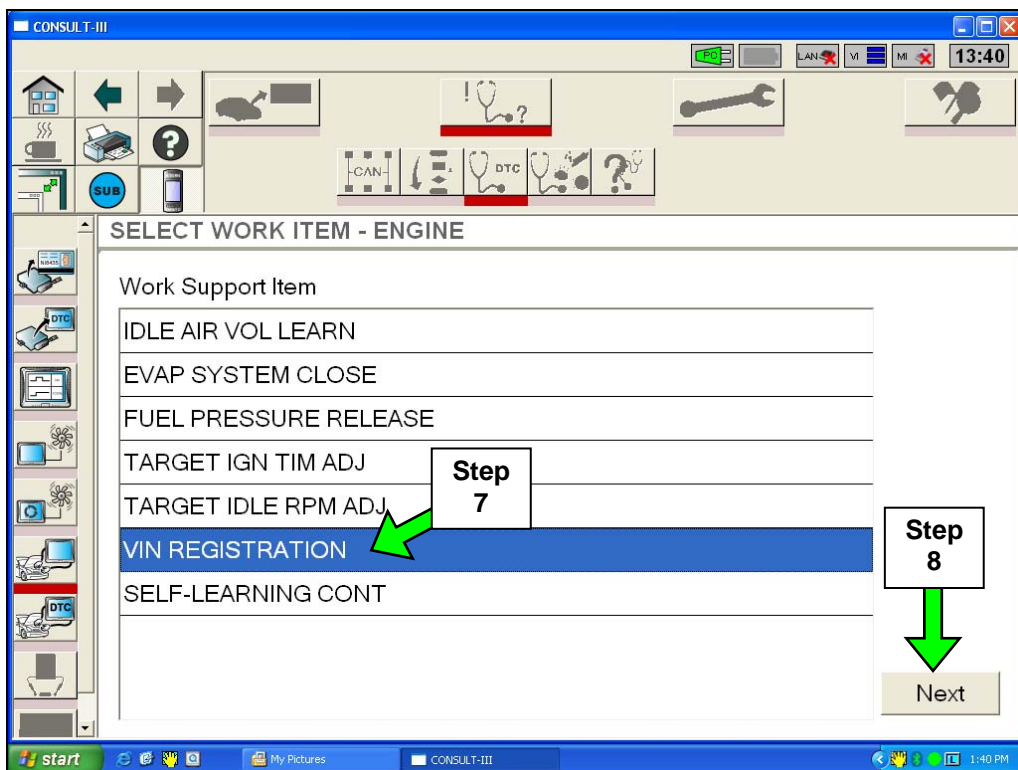


Figure 5

9. Make sure the ignition is ON with engine OFF.

10. Select **Start**

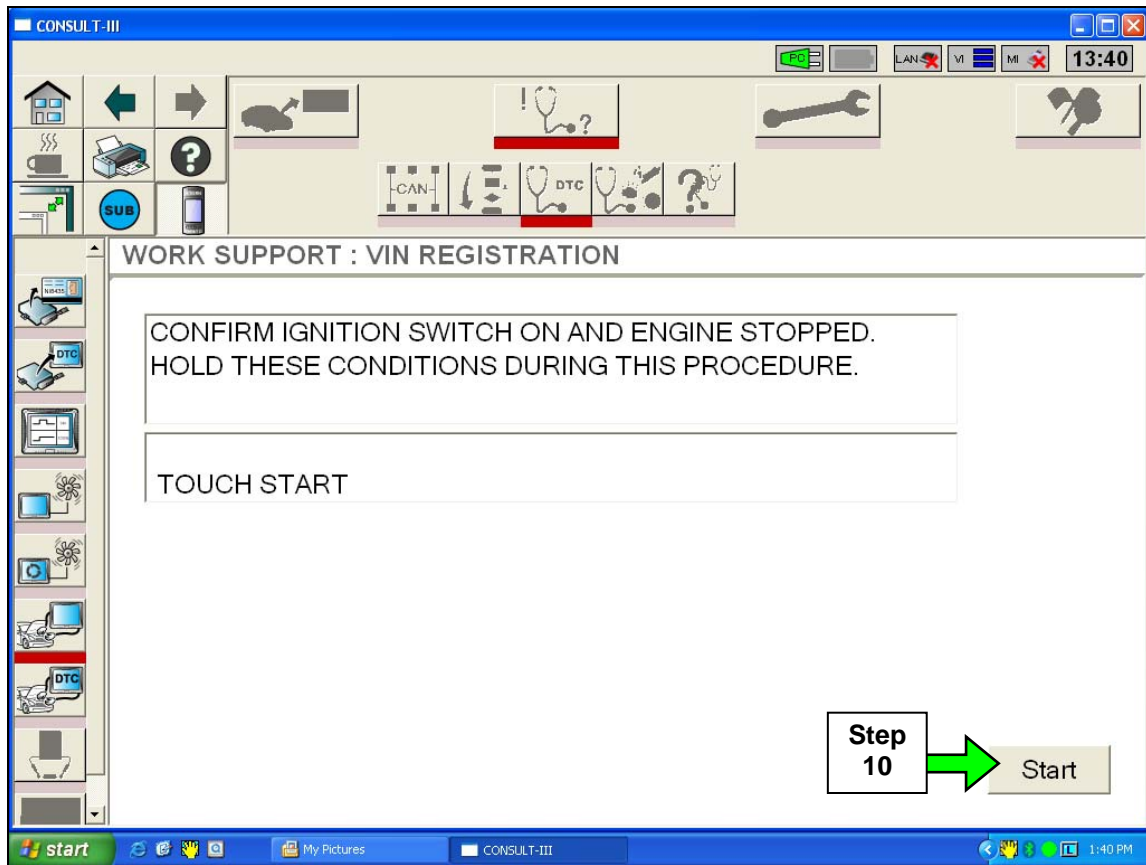


Figure 6

11. Enter the VIN into C-III two times (see Figure 7).

- Touch the C-III screen in the “VIN box” before typing.
- Make sure to use all CAPITAL LETTERS.
- Use the VIN from the vehicle you are working on.

12. Select **Start**

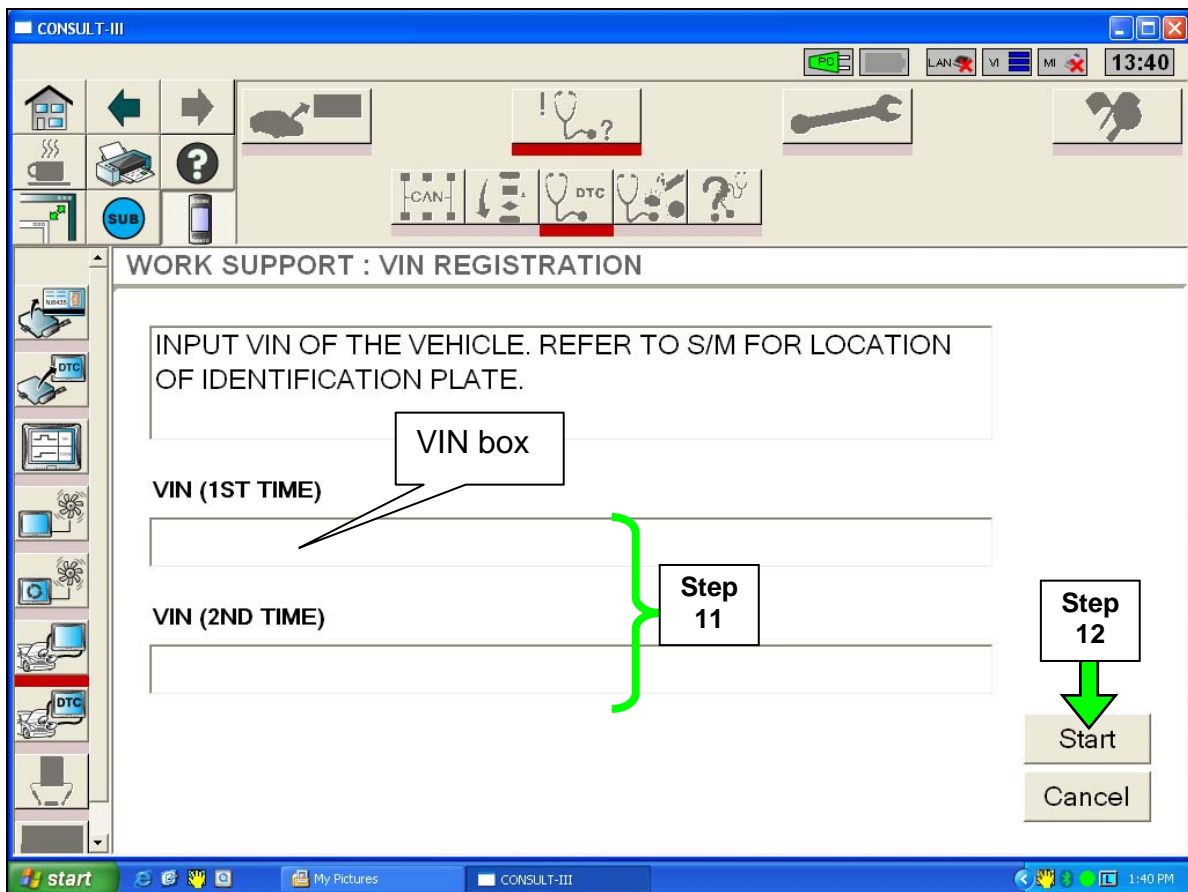


Figure 7

13. Turn the ignition OFF, and wait 10 seconds.

14. After waiting 10 seconds, turn the ignition ON.

15. Select **OK**

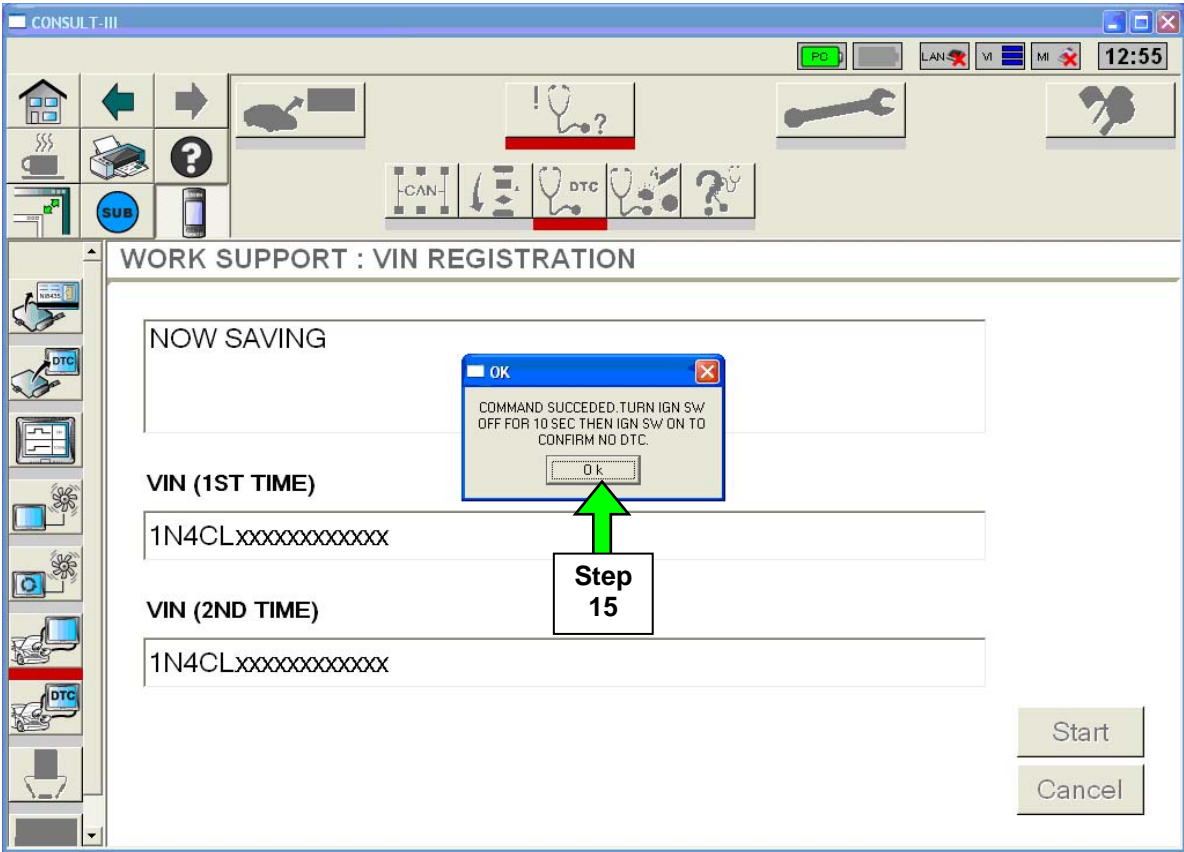


Figure 8

**VIN registration is complete**

