



SERVICE BULLETIN

Classification: AT09-016a	Reference: NTB10-003a	Date: February 11, 2010
------------------------------	--------------------------	----------------------------

5 SPEED A/T DTC DIAGNOSES FOR P1701, P1702, P1703, P1704, P1705, P1754, P1759, P1764, P1769, P1774

This bulletin has been amended. Additional DTCs were applied. Discard all previous copies.

APPLIED VEHICLES: 2003 – 2010 Nissan vehicles with 5-Speed A/T
APPLIED TRANSMISSION: RE5R05A ONLY

SERVICE INFORMATION

If one or more DTCs listed below are found stored in Self Diagnosis, use the **REPAIR FLOW CHART** on page 2 to assist in diagnosis.

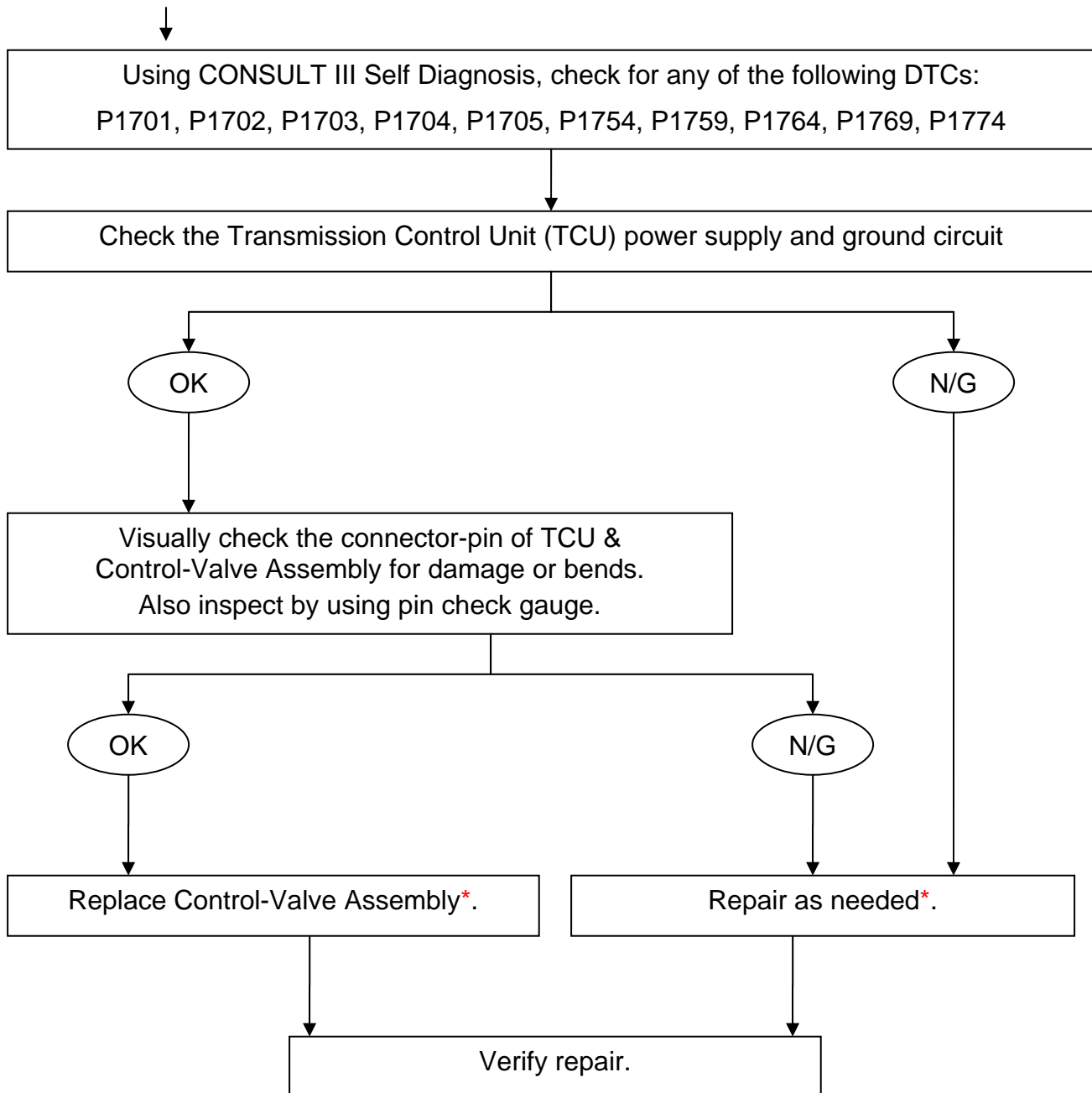
- DTCs: P1701, P1702, P1703, P1704, P1705, P1754, P1759, P1764, P1769, P1774.

IMPORTANT NOTE: If DTC(s) not listed above is/are found stored in Self Diagnosis, this bulletin does not apply. Refer to ASIST and the appropriate Service Manual for diagnostic procedure(s) as needed.

Nissan Bulletins are intended for use by qualified technicians, not 'do-it-yourselfers'. Qualified technicians are properly trained individuals who have the equipment, tools, safety instruction, and know-how to do a job properly and safely. NOTE: If you believe that a described condition may apply to a particular vehicle, DO NOT assume that it does. See your Nissan dealer to determine if this applies to your vehicle.

REPAIR FLOW CHART

Start Here



* Use standard repair and warranty procedures as applicable.