



# SERVICE BULLETIN

Classification: WT10-005b	Reference: NTB10-114b	Date: June 14, 2012
------------------------------	--------------------------	------------------------

## INFLATING TIRES EQUIPPED WITH TPMS

The publication date on this bulletin has been amended to include the newest models.

**APPLIED VEHICLE:** All Nissan with Tire Pressure Monitor System (TPMS)

### SERVICE INFORMATION

Improper use of tire inflator tools can break the stem of a Tire Pressure Monitor System (TPMS) sensor.

**NOTE:** The type of stem breakage shown in Figure 1 is not considered a warrantable repair.

Please refer to the following examples of recommended and not recommended tire pressure filling tools.



Figure 1

**Not Recommended** tire inflator tools.

**Long heavy hose with  
Lock-on air chuck**



**Deep well or dual  
head air chucks**



**Air chucks with  
handles or extensions**



Figure 2

Nissan Bulletins are intended for use by qualified technicians, not 'do-it-yourselfers'. Qualified technicians are properly trained individuals who have the equipment, tools, safety instruction, and know-how to do a job properly and safely. NOTE: If you believe that a described condition may apply to a particular vehicle, DO NOT assume that it does. See your Nissan dealer to determine if this applies to your vehicle.

Recommended tire inflating tools.

Shallow well air chucks

Air chucks with flexible hose (no extensions)



Figure 3

### Aftermarket Tire Sealers

Aftermarket tire sealants and/or aerosol repair kits should not be used (refer to the vehicle's Owner's Manual).

- Some aftermarket tire sealers and/or aerosol repair kits contain chemicals and propellants that can cause damage to TPMS sensors.

**NOTE:** Damage caused by use of aftermarket tire sealants contrary to recommendations in the vehicle Owner's Manual is not covered under the Nissan New Vehicle Limited Warranty.

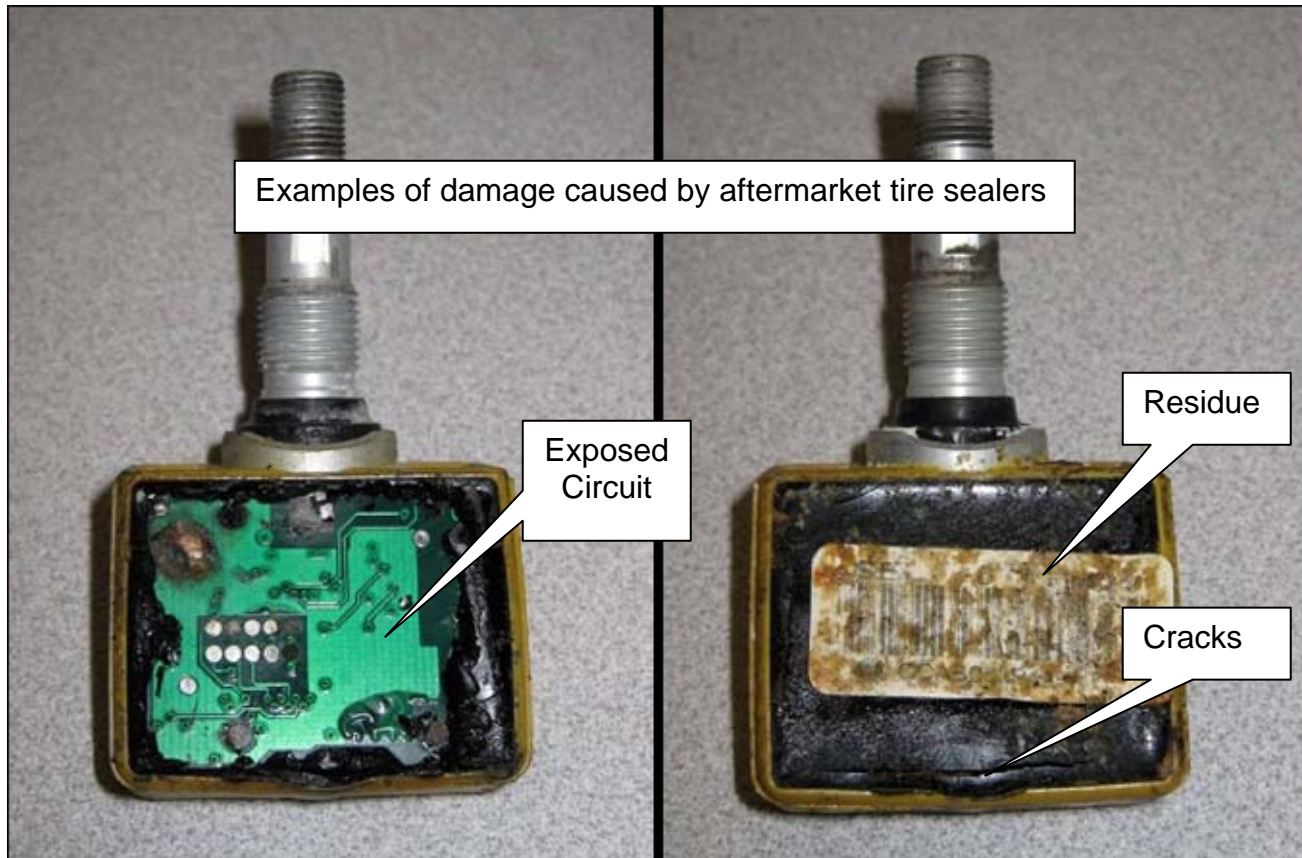


Figure 4